



## The Cottage

Kirknewton, Wooler, NE71 6TN

**Offers Over £499,950**

[www.aitchisons.co](http://www.aitchisons.co)



Located close to The National Park, in a secluded rural setting, near Kirknewton village and seven miles from Wooler, this attractive detached cottage is ideally suited for buyers looking for privacy, with the benefits of being a short drive to shops and facilities. Surrounded by the stunning Northumberland countryside, The Cottage has magnificent open views of the hills and surrounding areas. One of the main features of the property are the fifteen acres of grazing land, which a proportion of it, runs approximately half a mile alongside the River Beaumont with fishing and shooting rights, along with a two story outbuilding, which would be ideal for horses or livestock or a commercial workshop.

As you approach the house up a secluded drive, you will be greeted by its inviting façade, which reflects the original, traditional arts and craft house architecture. The property is set within large landscaped gardens and grounds bounded by mature trees creating privacy for the owners. The lawn at the side of the cottage used to be a tennis court, the lawns wrap around the property on all sides. Ample parking on a driveway that gives access to a garage.

The inside of the property is in need of modernisation and upgrading, however, it offers huge potential to create a stunning home for a family. The interior is entered into a large reception hall with the original staircase, there is a well proportioned lounge with a bay window and a recess to sit next to the open coal fireplace, there is a separate dining room which leads to a kitchen and a cloakroom. On the first floor are three good sized bedrooms, a toilet and a bathroom. Many of the original features have been retained including the fireplaces. Potential to extend the accommodation if required. The property has LPG central heating.

If you are looking for a secluded property with acreage and stunning countryside views, then look no further than this property. Contact our Wooler office to arrange an appointment to view.



## Entrance Hall

8'1 x 15'10 (2.46m x 4.83m)

A covered at the front leading to the entrance door which gives access to the hall, stairs to the first floor landing with an understairs cupboard. Double glazed doors giving access to the side garden, a central heating radiator and a cloaks hanging area.

## Lounge

19'8 x 15'8 (5.99m x 4.78m)

A spacious dual aspect reception room with a bay window to the front with a window seat below and a double and single window to the side. Recessed sitting area with an attractive sandstone open coal fireplace with a brick inset and hearth and seating either side. Coving on the ceiling and a central heating radiator.

## Dining Room

11'9 x 15'8 (3.58m x 4.78m)

A spacious dining room with a double window to the side with countryside views and a triple window to the rear. Shelved recess and two central heating radiators. Fully tiled open coal fireplace and half the floor has parquet flooring.

## Kitchen

8'2 x 10'2 (2.49m x 3.10m)

In need the modernisation, the kitchen is fitted with a range of wall and floor units with marble effect worktop surfaces with a tiled splashback. Sink and drainer below the double window to the side, c central heating radiator and space for an electric cooker. Plumbing for a washing machine.

## Rear Hall

3'6 x 3'3 (1.07m x 0.99m)

With a large walk-in utility cupboard with plumbing for an automatic washing machine and housing the wall-mounted central heating boiler.

## Toilet

2'9 x 5'5 (0.84m x 1.65m)

With a window to the side and containing a toilet with a high cistern.

## First Floor Landing

9'2 x 5'9 (2.79m x 1.75m)

With a walk-in shelved storage cupboard.

## Bedroom 1

11'8 x 15'9 (3.56m x 4.80m)

A good sized double bedroom with a double window to the front and side and a central heating radiator. Original fireplace with a timber surround.

## Bedroom 2

10'1 x 15' (3.07m x 4.57m)

A double bedroom with a double window to the side and the original fireplace. Built-in single shelved cupboard and a double wardrobe with extra cupboard space above. Central heating radiator.

## Bedroom 3

10'1 x 10'1 (3.07m x 3.07m)

A good sized bedroom with a double window to the side with countryside views with a central heating radiator below. Original timber fireplace with a tiled inset.

## Internal Hall

2'8 x 2'7 (0.81m x 0.79m)

Access to the bathroom and the toilet.

## Toilet

2'8 x 5'5 (0.81m x 1.65m)

Frosted window to the side and containing a toilet.

## Bathroom

6'6 x 8'7 (1.98m x 2.62m)

Containing a white two piece suite which includes a cast iron bath and a wash hand basin with a medicine cabinet above. Central heating radiator, a frosted window to the side and a built-in airing cupboard housing the hot water tank.

## Garden

The property is approached up a private driveway into a parking area which offers ample parking for a number of vehicles and giving access to the garage. Lawns



surrounding the property one was the original tennis court. The grounds are bordered by mature trees and shrubberies, creating privacy for the owners.

## Land

There are two fields which extend to approximately 15 acres, at the side of the cottage. One of the fields runs, for approximately half a mile, along the River Beaumont with fishing rights and shooting rights on the land. There is the original two storey hen house with concrete base which could be converted into stabling, a commercial workshop, etc. This paddock would be ideal for horses or livestock.

## General Information

Services- Drainage into a septic tank, private water supply and mains electric.

LPG central heating.

Tenure-Freehold.

Council tax band - A

Energy Rating - TBC

what3words: fatter.essay.rebirth

## Agency Information

OFFICE OPENING HOURS

Monday - Friday 9.00 - 17.00

Saturday 9.00 - 12.00

## FIXTURES & FITTINGS

Items described in these particulars are included in sale, all other items are specifically excluded. All heating systems and their appliances are untested.

## VIEWING

Strictly by appointment with the selling agent.

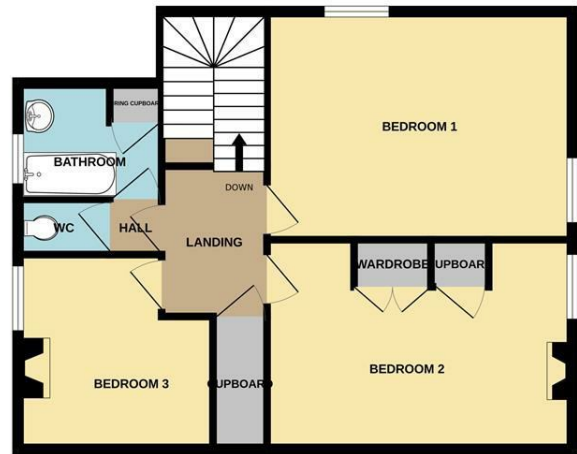




GROUND FLOOR  
666 sq.ft. (61.9 sq.m.) approx.



1ST FLOOR  
606 sq.ft. (56.3 sq.m.) approx.



TOTAL FLOOR AREA : 1272 sq.ft. (118.2 sq.m.) approx.

Whilst every attempt has been made to ensure the accuracy of the floorplan contained here, measurements of doors, windows, rooms and any other items are approximate and no responsibility is taken for any error, omission or mis-statement. This plan is for illustrative purposes only and should be used as such by any prospective purchaser. The services, systems and appliances shown have not been tested and no guarantee as to their operability or efficiency can be given.  
Made with Metropix ©2025



Important Information You may download, store and use the material for your own personal use and research. You may not republish, retransmit, redistribute or otherwise make the material available to any party or make the same available on any website, online service or bulletin board of your own or of any other party or make the same available in hard copy or in any other media without the website owner's express prior written consent. The website owner's copyright must remain on all reproductions of material taken from this website.

Berwick Office  
36 Hide Hill, Berwick-upon-Tweed  
Northumberland, TD15 1AB

T: (01289) 307571  
F: (01289) 302948  
E: berwick@aitchisons.co

Wooler Office  
25 High Street, Wooler  
Northumberland, NE71 6BU

T: (01668) 281819  
F: (01668) 281717  
E: wooler@aitchisons.co



Zoopa.co.uk

